

WHITE

FALL/SPRING REVERSIBLE SWEATSHIRT JACKET



Brighten up your spring and fall with this reversible sweatshirt jacket. it's easy to make and you can embellish each side any way you want! Add some trims or embroidery designs to make this jacket your own.

SUPPLIES

- Two purchased sweatshirts of the same style and size
- One reversible separating zipper (measure from bottom of neck ribbing to bottom of lower ribbing)
- 4.0mm double needle
- Rayon threads (colors of choice-variegated and solids)
- Tear-away stabilizer
- Water-soluble stabilizer

- 1/4 yard of print accent fabric
 - 1 yard of 3/8" grosgrain ribbon of five or more colors found in the print fabric
 - 1/4 yard of fabric to closely match the color of the sweatshirt
 - Fusible interfacing
 - Pencil
 - Ruler
- Superlock 2000ATS
White Embroidery Sewing Machine

DIRECTIONS:

Spring has sprung...

1. Cut both sweatshirts down the center front. NOTE: Match the ribbing, shoulder seams and side seams to determine the center front. Don't go by the fold that often shows on the front.



2. For the ribbon band, measure across the front of the sweatshirt to determine the length of the fabric band needed. Add at least 4" to this measurement. From the fabric that matches the sweatshirt, cut a band 3 1/4" by the length measurement. Following the manufacturer's instructions, fuse the interfacing to the wrong side of the band.

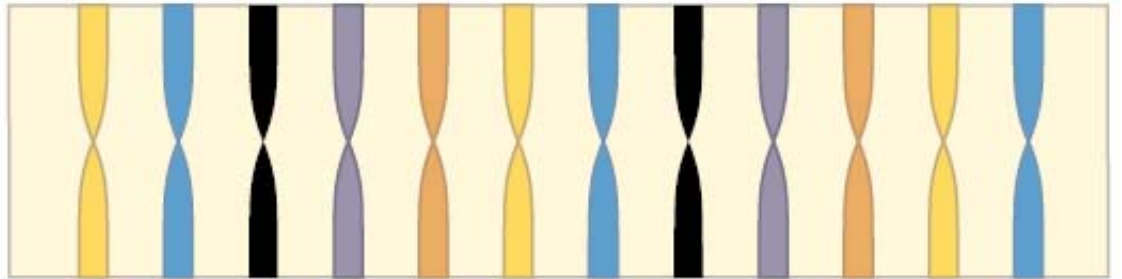


3. Mark in inch increments along the top and bottom of the band. Be sure to start from the same end when marking.

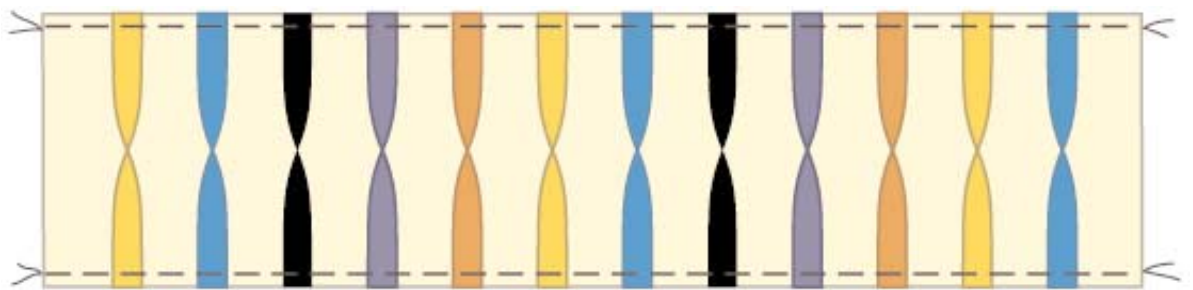


4. Cut 3 1/2" lengths of the assorted colored ribbons.

Pin a piece of ribbon at each mark on the band. Twist the ribbon once and pin the bottom end to the other side of the band. Continue along the entire strip mixing the colors of ribbon.

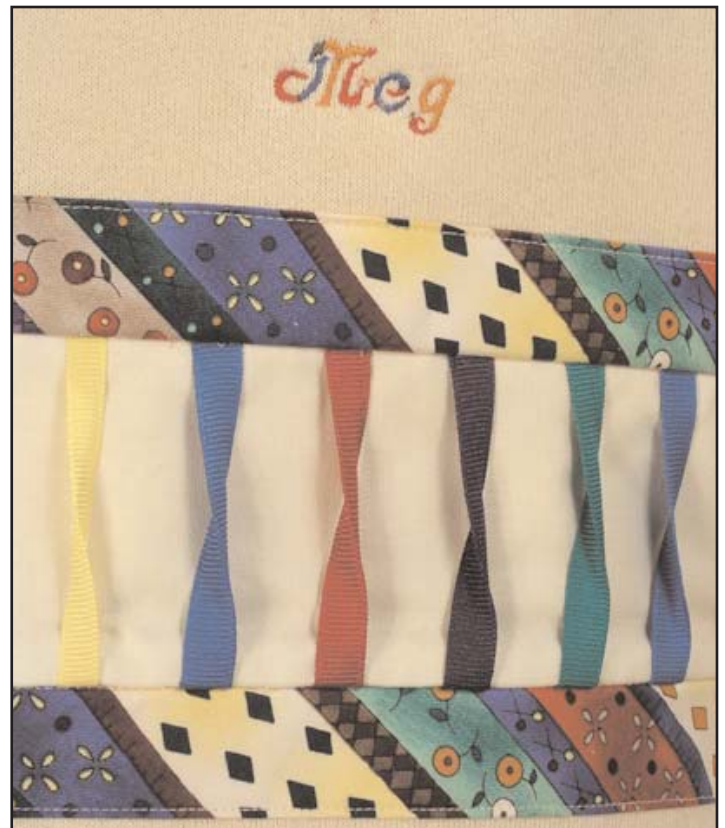


5. Baste the ribbons in place a scant 1/4" from the edge.

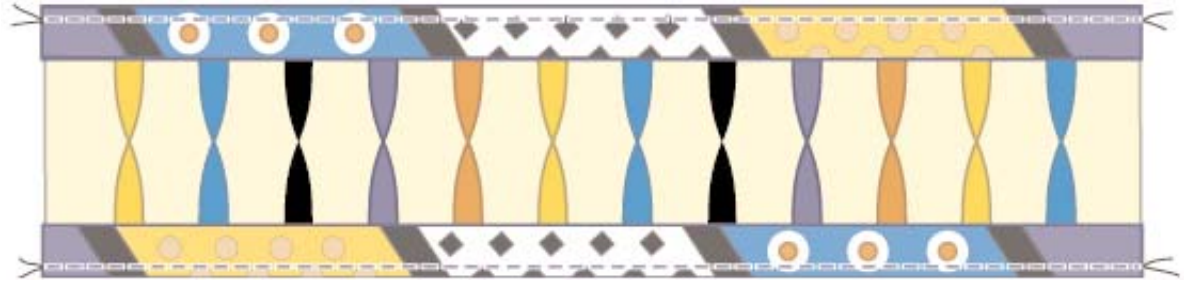


6. Cut strips of the accent fabric 3 1/2" wide by the length of the band (measurement previously taken) X 2. For the sample shown, this strip was cut on the bias for more interest.

7. Interface the band and fold in half lengthwise, wrong sides together.

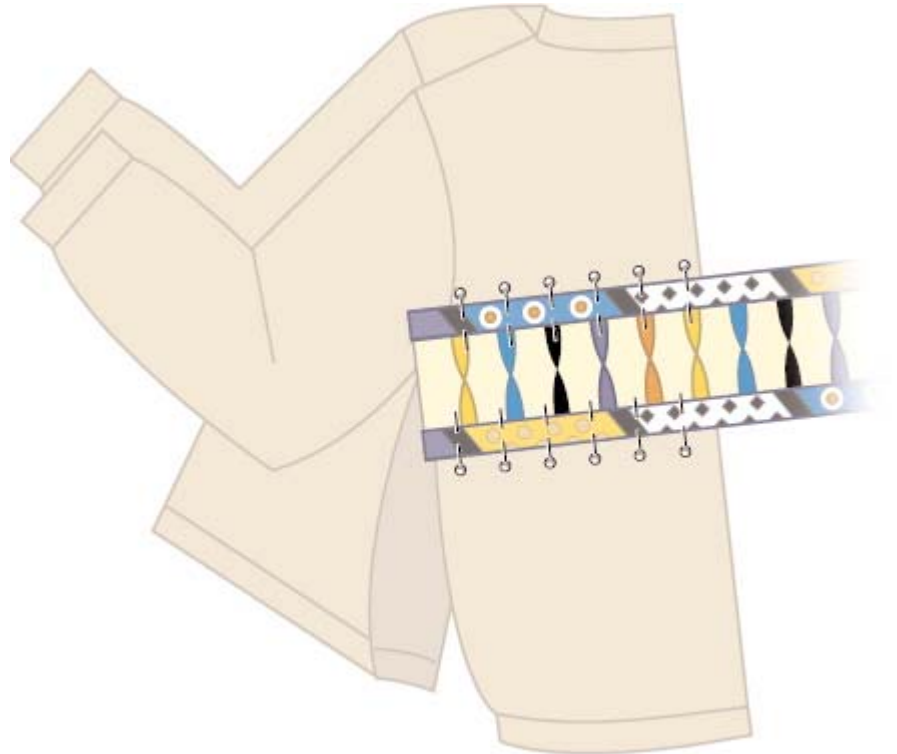


8. Using a 1/4" seam, stitch the accent band to the right side of each long edge of the ribbon band.



9. Press the seam under to the wrong side along the stitching line on both edges.

10. Open up the side seams, and the sleeve seams, if necessary. Pin the band to the sweatshirt front just below the armhole. NOTE: Carefull pinning is important with this project to prevent the stretch of the sweatshirt fleece from distorting the embellishments.



11. Topstitch the top and bottom of the band in place. Cut the band and repeat on the opposite front side.

12. Close any opened seams.



13. For the sleeve embellishment, open the seam of the sleeves starting approximately 1" above the cuff ribbing for 5" to 6" so the sleeve will lay as flat as possible.

14. Randomly place different colored ribbons across the sleeve. Pin in place every 1" to 2". The more pins that are used the less chance of the sweatshirt stretching as you stitch the ribbon to the sleeve.

15. Stitch in place using a 4.0 double needle.

16. Serge the seam closed with a 4-thread balanced stitch.



Fall Leaves...

SUPPLIES:

Leaf embroidery design of choice
Rayon threads (variegated and solid colors - e.g. warm "autumn" colors)
Tear-away stabilizer
Water-soluble stabilizer
Water- or air soluble marking pen

NOTE: The leaves embroidered on the "Fall Leaves" sweatshirt are actually all the same embroidery design but by changing thread colors the leaves appear as if you searched the entire forest for different ones!

1. Mark the placement for your leaf design on the front of the sweatshirt. Place the sweatshirt in the embroidery hoop with the water-soluble stabilizer on top and the tear-away underneath. The water-soluble stabilizer will keep the design from sinking into the sweatshirt.

2. Embroider the main section of the leaf using the variegated thread. For an accent, use red, green or brown threads, then dark brown for the twig or branch. The accent colors brings out different colorations in the variegated threads and the leaves look as if they are in different stages of color Fall color change.

3. For fun, add your name to the sleeve using the variegated thread.



Now for the Reversible Sweatshirt Jacket...

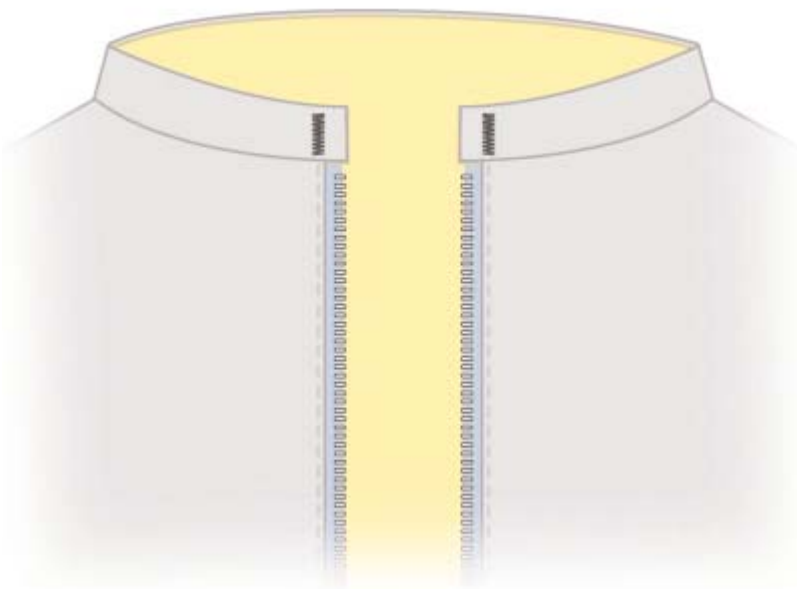
1. Turn the sweatshirts inside out and match the center front of one to the center front of the other with right sides together.





2. Separate the zipper into two pieces and place between the center fronts with the teeth to the inside; pin in place. Position so the bottom tab of the zipper is at the edge of the ribbing and the top of the zipper is at the bottom edge of the neckline ribbing. NOTE: If you are working with a longer zipper, fold the extra over into the seam at the top.

3. Stitch from the bottom edge to the top adjusting your needle position if necessary to sew about 1/4" from the teeth. Repeat on the other side of center front.



4. Turn both sweatshirts right side out with one inside the other. Turn back the raw edges of the neckline ribbing on both sides and stitch using a bartack or wide zig zag stitch.

5. Match the neckline, the cuffs, and the bottom ribbing seams and pin. Stitch-in-the-ditch through both layers in each place to hold both sweatshirts together.